

ULTRAFLEX 

 | quick-clip

create visual  
impact that  
commands  
attention



## ||| quick-clip

Ultraflex quick-clip prefinished decorative batten system is available in aluminium and solid timber.

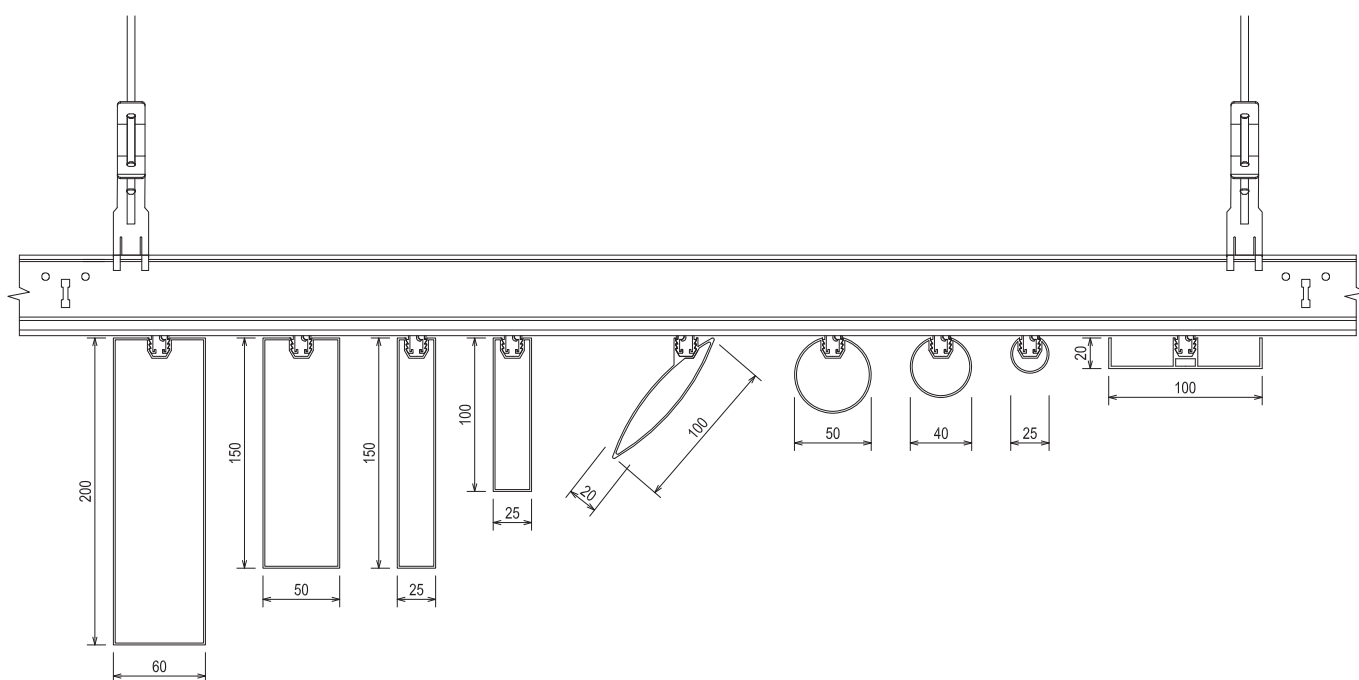
Quick-clip incorporates a patent protected design making it the fastest installed system in the market today. Available in a host of profiles and colours.

Create visual impact that commands attention and delivers acoustic performance using Ultraflex quick-clip decorative batten system. Quick-clip's proprietary inverted design creates a fully concealed batten fixing with the carrier rail attaching to a commercially available hanger and grid framing system making installation exceptionally fast and simple whilst giving a smooth transition into typical ceilings.

## Aluminium

The ideal solution for spaces requiring a group one fire rating, Quick-clip lightweight aluminium battens are available in anodised, solid powder coated, timberlook powder coated and laminated timberlook. quick-clip can be used in a variety of internal and limited external applications.

### profiles



other profiles available on request

# Solid Timber

Consolidate the uncompromising look of natural timber battens using the Ultraflex quick-clip system. Maintain the warm beauty and characteristics with all the confidence of a proven Australian made fixing system. Quick-clip solid timber battens are available in a variety of species, dimensions and finishes and can be used in a range of internal and limited external applications.



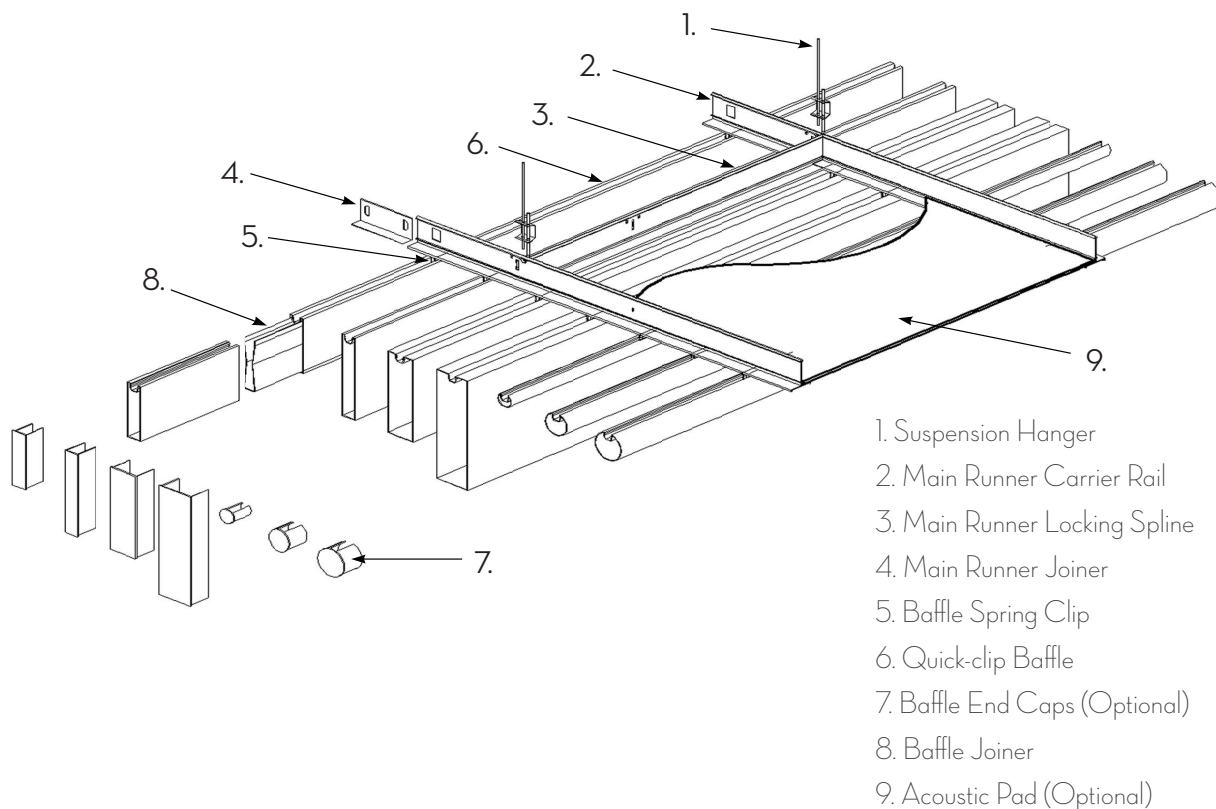
# Information

<p><b>Coating</b></p>	<p>Quick-clip aluminium battens in solid colour and timberlook profiles are coated in highly durable powder coated finishes. Powder coated finishes are more consistent than conventional liquid coatings. Powder coating is tough, resilient and scratch resistant.</p> <p>Quick-clip timber battens are generally coated in a low VOC clear lacquer or Cutek finish.</p>
<p><b>Fire Testing</b></p>	<p>Quick-clip Aluminium has been tested to AS5367.1-2015 and achieves a Group 1 fire rating</p> <p>Quick-clip Timber battens achieve a typical Group 3 fire rating</p>
<p><b>Applications</b></p>	<p>Quick-clip Can be used in Walls and Ceiling linings</p>
<p><b>Environment</b></p>	<p>Powder coating contains no solvents and release little to no VOCs into the atmosphere providing an environmentally friendly solution. Overspray can be collected and recycled.</p>
<p><b>Aluminium</b></p>	<p><b>Alloy 6063</b> is a heat-treatable 0.7% magnesium, 0.4% silicon alloy offering good mechanical properties ultraflex range of extruded sections.</p>
	<p><b>Corrosion Resistance</b></p> <p>Excellent in a wide range of atmospheric environments and it is also acceptable in many marine environments. This alloy is particularly suitable for anodising for architectural applications.</p> <p>The magnesium content is low enough that it does not suffer from the stress corrosion cracking that can affect alloys with more than about 3% Mg, such as 5083.</p>
	<p><b>Heat Treatment</b></p> <p>Alloy 6063 is hardenable by solution treating (522°C followed by water quenching) and ageing (precipitation) heat treatment. It is most commonly supplied in the aged T5 or T6 tempers.</p> <p>To soften Alloy 6063 back to Temper O it can be annealed by heating to 415°C, holding for 2 - 3 hours then cooling; the rate of cooling should be about 30°C per hour down to 260°C. The rate of cooling below that is not important.</p> <p>Heating to 345°C followed by uncontrolled cooling may be used to remove the effects of cold work, or to partially remove the effects of heat treatment.</p>

# Installation Guide

1. Ensure goods have been stored in accordance with manufacturers recommendations and all components are present as per the assembly diagram below. As with all pre-finished surfaces each of the components must be handled with due care. Work areas must be clean with no abrasive surfaces to avoid scratching. Products should be lifted carefully and not dragged along other surfaces.
2. Suspension hangers shall be installed into the roof structure at 1200mm max centres in accordance with the manufacturers recommendations according to the roof structure being fixed to.
3. Main Carrier Rails shall be clipped/hooked onto the suspension hangers at 1200mm max centres, ensuring that return leg of the carrier rails remains on the same side when joined end to end and from row to row. This is very important to maintain de-mountability of the baffles following installation. The spring clips must be in the same orientation to allow the removal of baffles.
4. Main Runner Locking Splines are then to be inserted at 1200mm centres into the pre-punched slot locations on the carrier rails to lock the primary grid system together.
5. Where carrier rails are joined end to end, use the Main Runner Joiner clips provided to ensure a strong joint and maintain good alignment of the carrier rails.
6. The Baffle Spring Clips are pre-fitted to the carrier rails at specified centres. Use a laser level during installation to ensure the clips are in vertical and horizontal alignment between carrier rails.
7. For cutting and fabrication of aluminium baffles and rails use a drop saw or similar and ensure a sharp aluminium blade is used. Appropriate PPE must be worn.
8. Quick-clip Baffles are profiled in the top edge to push up over the spring clips. Ensure the baffles are fully clipped into the spring clips by pushing the baffles hard up to the underside of the carrier rails.
9. Baffle End Caps are provided when specified to close off the exposed ends of the baffles. Simply push the end caps into the baffles until they sit flush with the end of the extrusion.
10. Where baffles are joined end to end, use the Baffle Joiners provided to ensure a strong joint and maintain good alignment of the baffles. The baffle joiners simply squeeze together to slide inside the baffle extrusions.
11. Where specified, acoustic ceiling tiles or black acoustic mats can be installed onto the flange of the carrier rail grid system in 1200x1200 modules prior to baffles being clipped in place.
12. To remove baffles after installation is complete simply roll the baffle extrusion away from the spring clip pivot point and the baffle will click out of the clip. Once removed it can be re-installed by pushing back up over the spring clip again to the underside of the carrier rail.

# Assembly Components

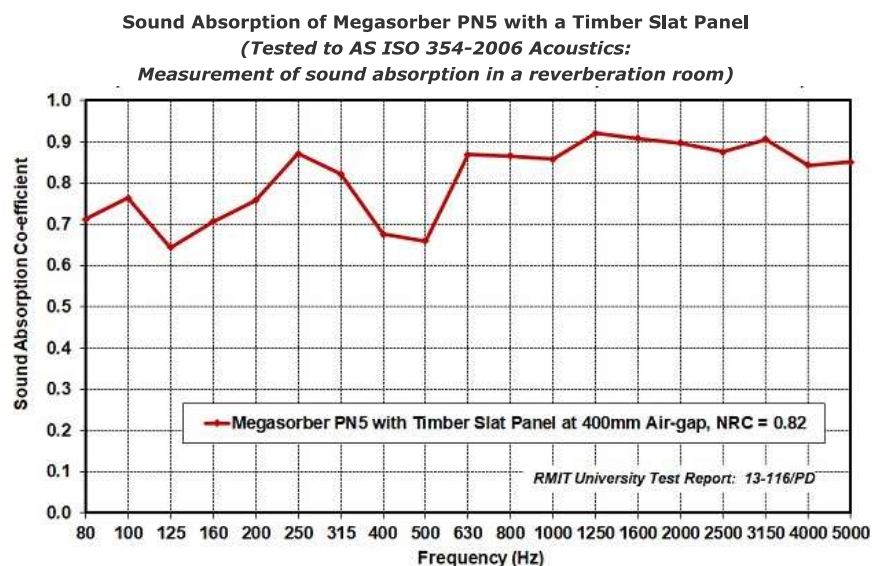


# Acoustic Performance

Optional acoustic backing for Quick-clip assemblies is available. Factory applied Megasorber PN5 is a semi-rigid sound absorption board with a patented, acoustically tuned fireproof sound absorbing facing Soundmesh® G8.

Soundmesh G8 has been engineered and tuned to maximize the sound absorption. As a result, Megasorber PN provides exceptional high sound absorption, especially at low to mid frequencies.

The acoustic lining material lays directly onto the back of the battens and serves a dual purpose of concealing unsightly framing systems and services within the ceiling plenum. With an open area of 50% and 400mm plenum depth the Megasorber PN5 with G8A Soundmesh facing achieves an nrc of 0.82.



Megasorber PN5 with G8A match the aesthetic warmth of our UltraSlat™ panels.

Contact Ultraflex for further acoustic options, technical information and support.

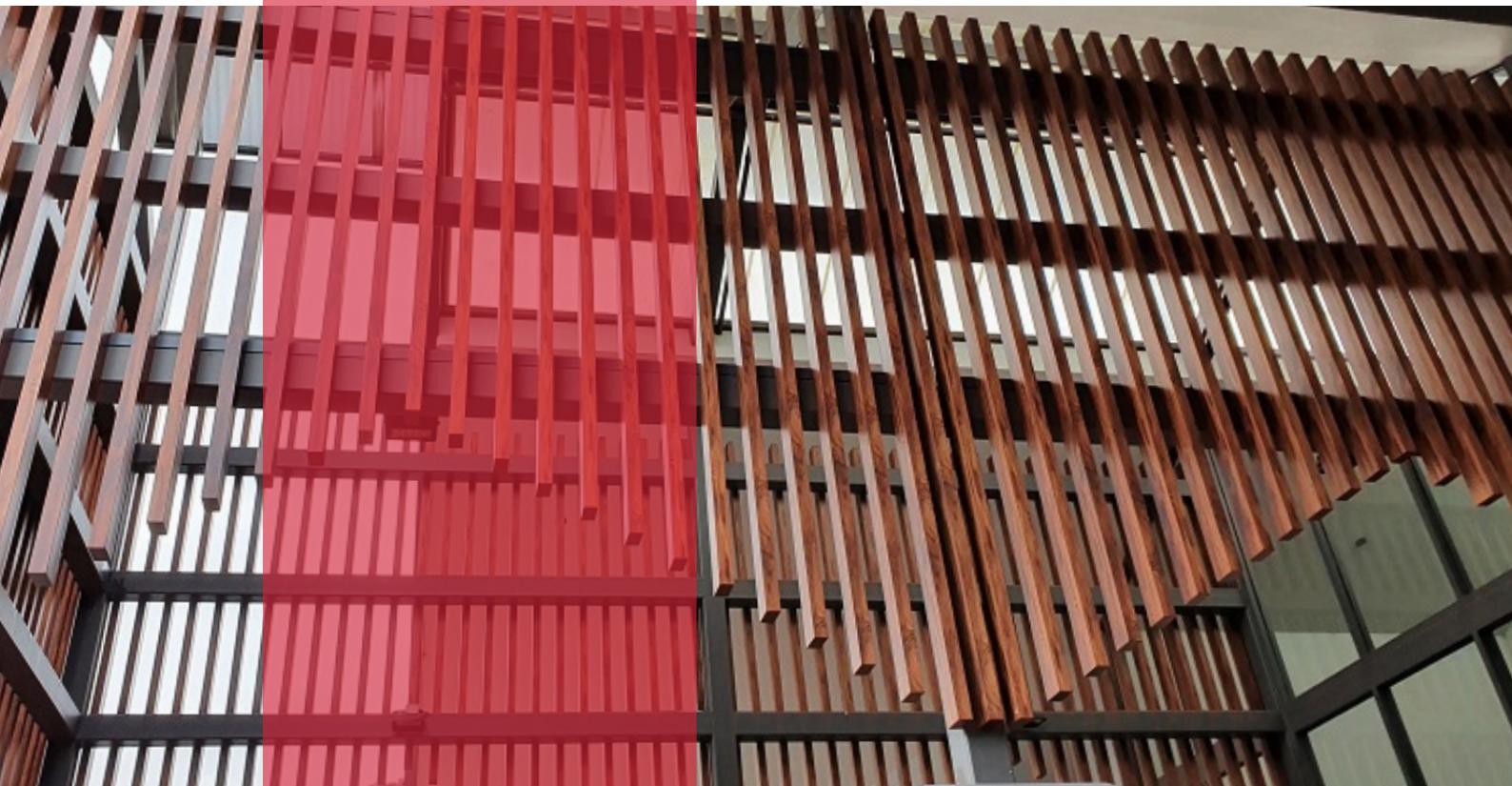


ULTRAFLEX

quick-snap



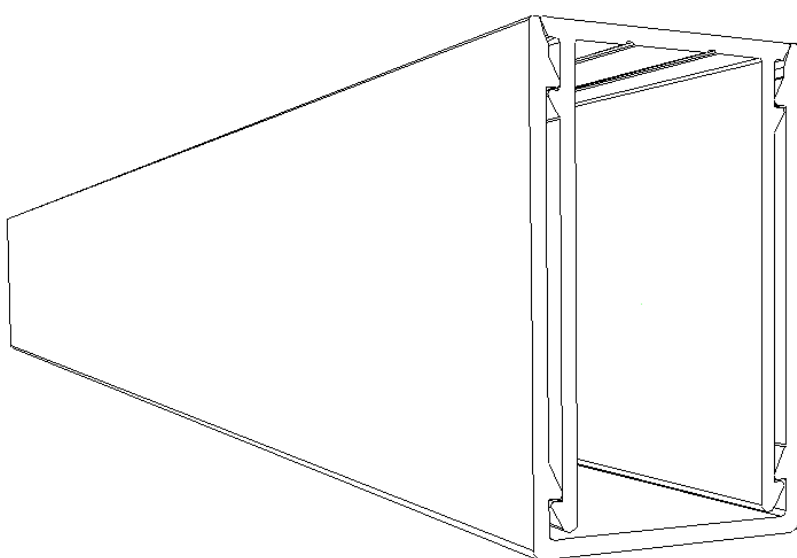
create visual  
impact that  
commands  
attention



**Quick-snap** is an Australian Manufactured architectural façade system designed for both external and internal applications. It features a two-part system: a base that attaches to a subframe or substrate, and a batten that clips onto the base, concealing the fixings. This versatile system allows for vertical or horizontal installation, making it suitable for walls and ceilings. Its simple design facilitates quick installation, resulting in a clean, seamless finish. Quick-snap is adaptable for use in residential, commercial, and industrial settings, providing both aesthetic appeal and functional performance.

## Aluminium

The battens used in the Quick-snap system are manufactured through an extrusion process and are available in various sizes and thicknesses ranging from 2.5mm to 3mm, with a standard length of 6500mm. Additionally, the system offers self-mating shrouds that can reach depths of up to 600mm. The battens are made from 6060 T5 premium grade aluminum alloy, ensuring durability and strength for both external and internal applications.



### Standard Dimensions

- 30mm x 30mm
- 30mm x 50mm
- 40mm x 80mm
- 50mm x 25mm
- 50mm x 100mm
- 50mm x 150mm
- 50mm x 200mm

other profiles available on request

## Finishes

Quick-snap battens are Made-To-Order and are Powder coated in any Dulux or Interpon solid colours, Woodgrain finishes are sublimated using the latest technology.

## Note

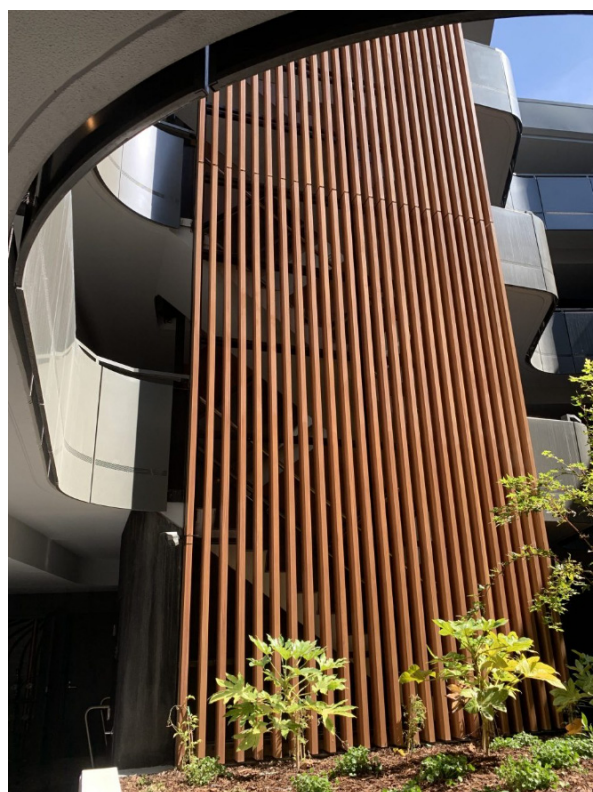
Aluminium is not resistant to all chemical compounds. Consequently, contact with particularly aggressive products like hydrochloric acid (HCl) and phosphoric acid (H<sub>3</sub>PO<sub>4</sub>) should be avoided. Products generally used to clean stone, ceramic and porcelain tiles, such as muriatic acid, ammonia and bleach, damage the surface finish on the metal and can cause intense corrosion. Moreover, any residues of concrete, adhesive, and grouting materials must always be removed from the surface of the profiles as quickly and delicately as possible.

## Fire

Tested to both 1530.1 and 1530.3 and found to be compliant being fully non-combustible and conform to the simultaneous determination of ignitability, flame propagation, heat and smoke release.

## Fixing

Fixing tables are intended as a general guide and may not cover specific scenarios. Before placing any orders it is important to take into account site-specific conditions, including seismic design requirements and compliance with local and state regulations. Any project-specific engineer's report will take precedence over the general information provided within ensuring the system meets the unique needs and safety requirements of your project.



# Fixing Tables

## FIXING INTO STEEL STUD WALL

	Wind Region A	Wind Region B	Wind Region C
Steel stud 0.55BMT	2 No. Buildex #12-14 Metal Tekes at 2050mm centres	2 No. Buildex #12-14 Metal Tekes at 1250mm centres	2 No. Buildex #12-14 Metal Tekes at 800mm centres
Steel stud 0.75BMT	2 No. Buildex #12-14 Metal Tekes at 2750mm centres	2 No. Buildex #12-14 Metal Tekes at 1700mm centres	2 No. Buildex #12-14 Metal Tekes at 1100mm centres
Steel stud 1.20BMT	2 No. Buildex #12-14 Metal Tekes at 2750mm centres	2 No. Buildex #12-14 Metal Tekes at 1700mm centres	2 No. Buildex #12-14 Metal Tekes at 1100mm centres

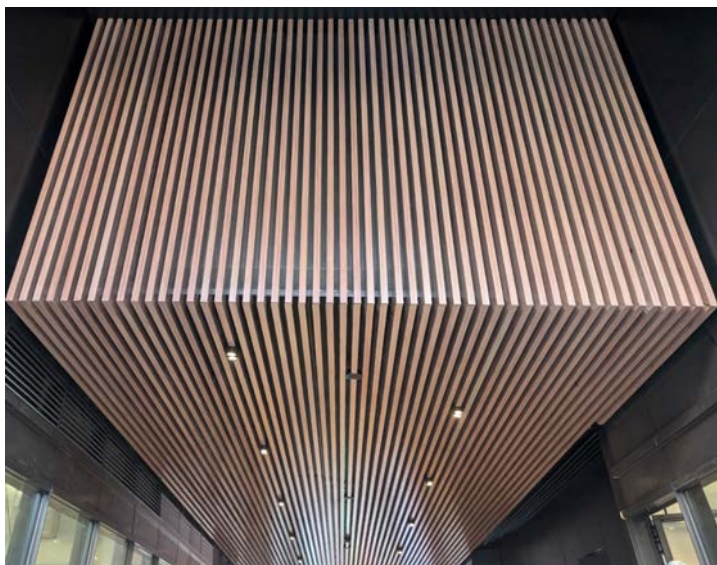
## FIXING INTO CONCRETE WALL

	Wind Region A	Wind Region B	Wind Region C
Concrete ≥Grade N25	Hilti HUS-HR 8 Anchors at 3100mm centres	Hilti HUS-HR 8 Anchors at 1950mm centres	Hilti HUS-HR 8 Anchors at 1300mm centres

## FIXING INTO TIMBER STUD WALL

	Wind Region A	Wind Region B	Wind Region C
F7 Timber stud Pine	2 No. Buildex #12-11 BattenZips Screws at 2750mm centres	2 No. Buildex #12-11 BattenZips Screws at 1700mm centres	2 No. Buildex #12-11 BattenZips Screws at 1100mm centres
F7 Timber stud Hardwood	2 No. Buildex #12-11 BattenZips Screws at 2750mm centres	2 No. Buildex #12-11 BattenZips Screws at 1700mm centres	2 No. Buildex #12-11 BattenZips Screws at 1100mm centres





# Care and Maintenance

## Introduction

Ultraflex manufacture a range of internal and external architectural lining products including aluminium, laminated veneer, melamine, solid timber and acrylic.

## Handling and Storage

As with all pre-finished surfaces, Ultraflex products must be handled with due care - work areas must be clean and abrasive surfaces should be avoided to prevent scratching. Products should be carefully lifted and not dragged along other surfaces. Ultraflex products should be stored indoors in an area protected from direct sunlight and free from moisture. Panels should be stored face to face with protective packing material between the faces. Packs should be evenly supported, and supports should be vertically aligned at 600mm max centres where multiple packs are stacked.

## Cleaning and Maintenance

### Clear Coat, Powder Coated, Painted and Pre-finished Surfaces

General regular cleaning is best carried out using a damp cloth or sponge with a mild non-abrasive household detergent, abrasive cleaning chemicals or strong solvents must not be used.

Should any panels be mechanically damaged, please consult Ultraflex to discuss the best options for repair or replacement. Minor mechanical damage to painted surfaces can often be repaired by a reapplication of the topcoat colour to the damaged area using a small, fine haired brush.

### External Oiled Timber

Timber is a natural material and as such variations in colour, grain, gloss level are to be expected and its longevity in external applications will also vary with site conditions as the timber weathers naturally to a grey colour. Our pre-finished timber products for external applications are supplied with 2 coats of penetrating oil which typically needs to be reapplied every 12-24 months depending on specific site installation conditions.

### Fabric Surfaces

Care must be taken when cleaning upholstered products as the following instructions apply to the fabric only and the possible impact of cleaning on the underlying structure must be considered. Professional cleaning is recommended to treat stains as soon as possible.

Gently wipe any soil or liquid from the surface of the fabric with a clean soft cloth. Do not scrub or use a brush of any type. Fabric may be cleaned using upholstery shampoo or spot cleaned using dry cleaning solvent. Do not use dish washing or laundry detergents.

Always test cleaning products on an inconspicuous area prior to commencing cleaning. Dry the cleaned surfaces away from direct heat and sunlight.

---

## DELIVERY OPTIONS

---

ULTRAFLEX PREFINISHED DECORATIVE BATTENS ARE AVAILABLE IN VARIOUS SUPPLY OPTIONS



### Supply

Prefinished Decorative Battens can be purchased as supply only in full lengths ready to fabricate.

Pick-up or national delivery.



### Assembled

Prefinished Decorative Battens can be supplied fabricated and assembled ready for installation.

Pick-up or national delivery.



### Installed

In certain areas Prefinished Decorative Battens can be fully fabricated, assembled and installed by our team of qualified installers.



Scribble:

